



**North Santiam
Sewer Authority**

northsantiamsewer@gmail.com

northsantiamsewer.net

P.O. Box 256
444 S 1st Ave
Mill City, OR 97360

NSSA Work Session Agenda

November 20, at 6 PM

Hybrid

Mill City Hall

444 S 1st Ave., Mill City, OR 97360

[https://zoom.us/j/934](https://zoom.us/j/93414748822?pwd=MjJkM3Vyb21YS1BDK2doVEplZ25uUT09)

[14748822?pwd=MjJkM3Vyb21YS1BDK2doVEplZ25uUT09](https://zoom.us/j/93414748822?pwd=MjJkM3Vyb21YS1BDK2doVEplZ25uUT09)

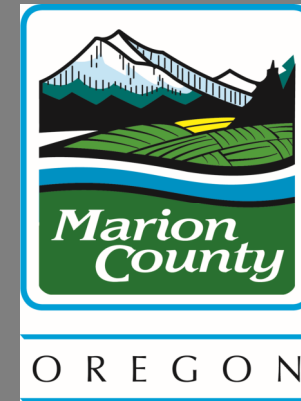
Meeting ID: 934 1474 8822

Passcode: 454959

- A. Roll Call and Declarations of Conflicts of Interest
- B. Announcements
- C. Public Comment and Questions (please limit Public Comments to 3 minutes each)
- D. Work Session:
 - a. Introduction and Discussion with Attorneys (Conroy, Brooks, Balfour)
 - i. Tommy Brooks, Cable Huston
 - ii. Clark Balfour, Cable Huston
 - b. O & M Costs overview (Peter Olsen with Keller)
 - c. County Update (Brian Nicholas, Public Works Director)

Upcoming Events:

Date	Event	Location
12/4	Regular Board Meeting	Mill City/Hybrid
12/18	Work Session	Mill City/Hybrid



North Santiam Canyon Sewer Project Operation and Maintenance Overview

November 17, 2023

www.northsantiamsewer.net

Wastewater Treatment Facility Costs

There are two types of costs associated with treatment facilities:

- Capital Costs (Construction)
- Operation & Maintenance (O&M), Replacement Costs



The Importance of O&M

Proper O&M is critical to making sure the treatment facility is:

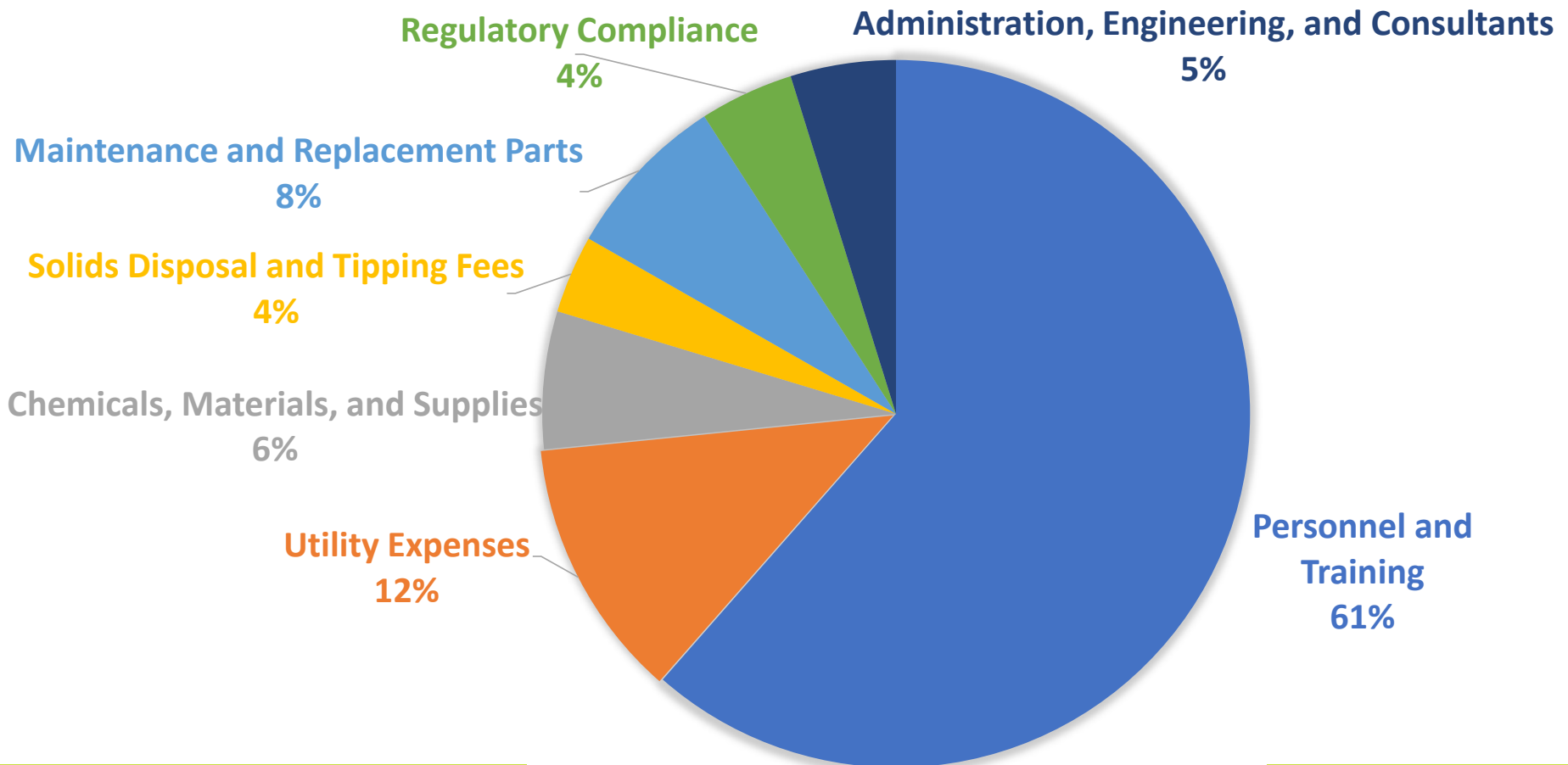
- Operating safely and efficiently.
- In compliance with government regulations.

In addition, routine preventive maintenance can:

- Lower overall operating costs.
- Reduce equipment downtime.
- Prevent excessive wear and tear and sudden failure of components.
- Prolong the life of the asset.



Operation & Maintenance Budget



Wastewater Treatment Facility Classification

The level of classification is determined by the level of complexity. Operators must meet certification requirements to operate various classes of wastewater treatment facilities.

OAR 340-049-0025

Criteria for Classifying Wastewater Treatment Systems

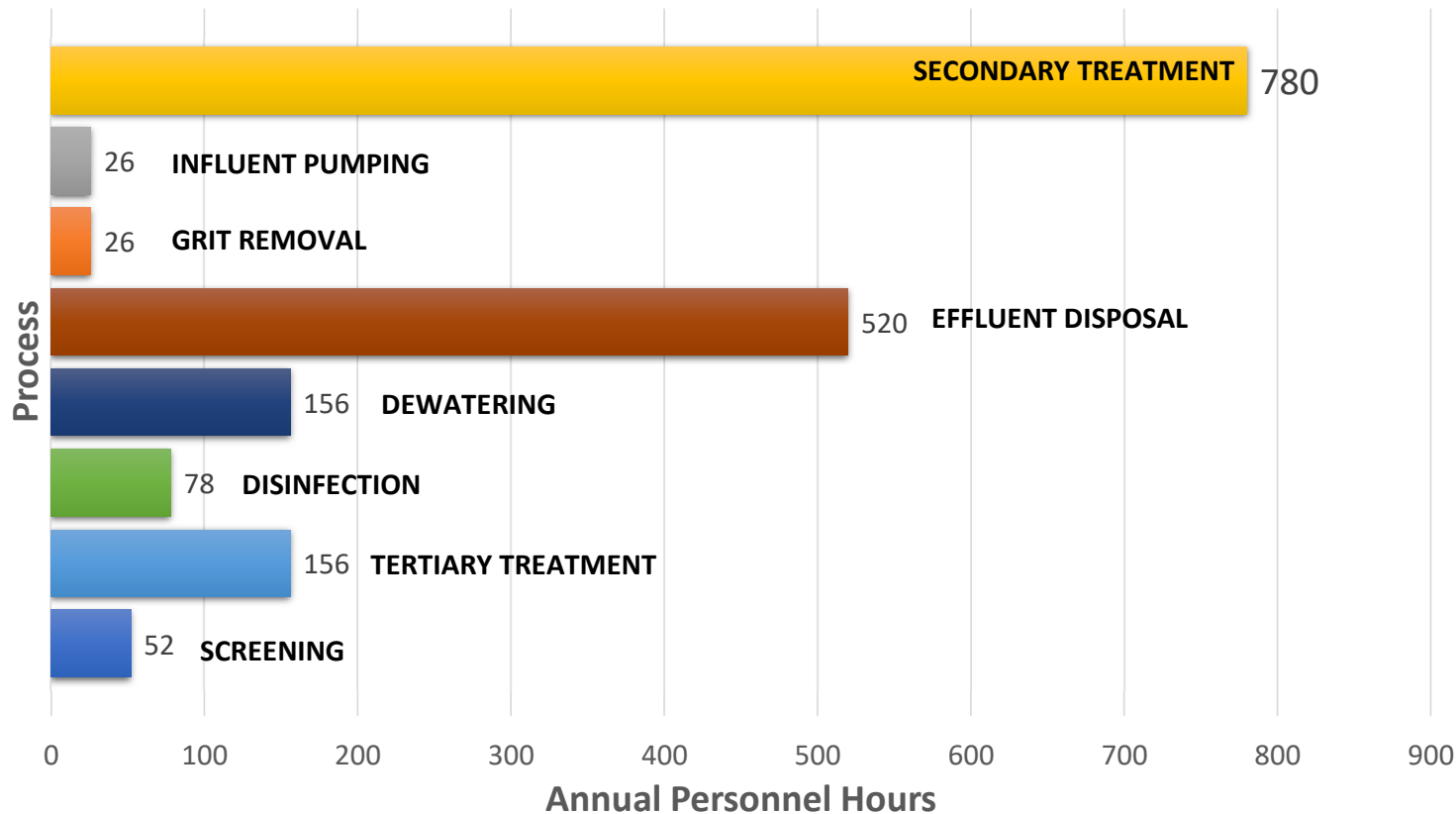
- Design Population
- Flow
- Preliminary Treatment and Plant Hydraulics
- Primary Treatment
- Secondary, Advanced, and Tertiary Treatment
- Solids Handling
- Disinfection
- Effluent Permit Requirements
- Variation in Raw Waste
- Sampling and Laboratory Testing

WWTP CLASSIFICATION TABLE*

	Class	Wastewater Treatment Process	Design Flow (million gal/day)	In Oregon:
EXISTING	I	Primary Conventional Treatment Pond	1.0 or less All	Up to 30 Total Points
		Primary Biofiltration Modified Treatment Pond	>1.0 - 5.0 1.0 or less All	31 to 55 Total Points
PROPOSED	III	Primary Biofiltration Activated Sludge Sequencing Batch Reactor . . . Tertiary	>5.0 - 20.0 >1.0 - 10.0 5.0 or less 1.0 or less 1.0 or less	56 to 75 Total Points
		IV Primary Biofiltration Activated Sludge Sequencing Batch Reactor . . . Tertiary	>20.0 >10.0 - 30.0 >5.0 - 20.0 >1.0 - 10.0 >1.0 - 10.0	76 or More Total Points



Personnel Hour Assumptions



Annual personnel hours were based on:

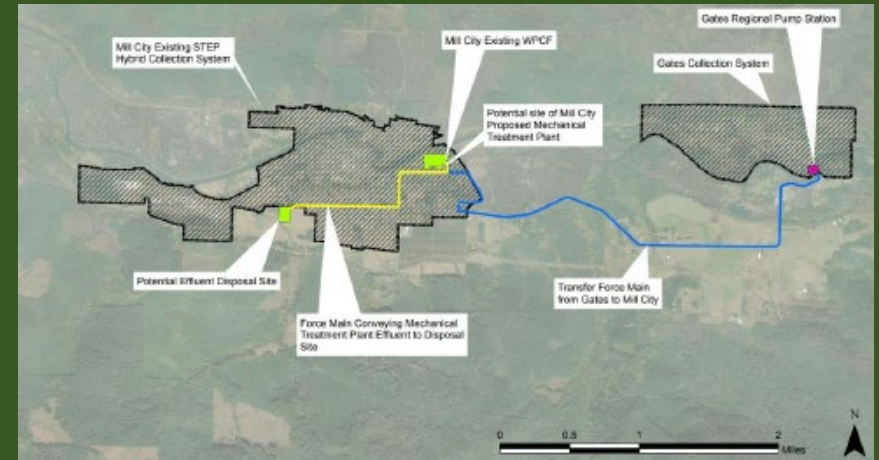
- Comparable treatment facilities.
- Manufacturer recommendations for equipment maintenance.





System Planning

1. Mill City – Gates WPCF location
2. Mill City – Gates interconnect pipeline location
3. Gates Collection System
4. Mill City Collection System
5. Permit Feasibility





Operations

1. Personnel Resources
2. Operational Demands
3. Operation & Maintenance Costs





Financial Models

1. Initial Capitalization
2. Customer Cost Burden
3. Predictive Financial Model

